

beCuriou presents:



SOUTH BEACH

THE RESIDENCES

Exclusive beachfront resort

RECOMMENDED FOR



Nightlife



Beach lovers



Location



# SOUTH BEACH

THE RESIDENCES





“the W South Beach  
is a lesson in the  
unadulterated luxe of  
the Miami lifestyle”

*-Wallpaper, July 2009*



“a contemporary oasis  
on a bustling strip”

*-Travel + Leisure, October 2009*



Photo: Nikolas Koenig

Exquisitely finished and furnished condominium residences in the heart of South Beach offering W Hotel's exceptional Whatever/Whenever<sup>®</sup> signature service



“It’s chic, sophisticated,  
buzzing, beachfront, and,  
perhaps most importantly,  
culturally relevant.”

*--Haute Living, December 2009/January 2010*





THE RESIDENCES

“super chic  
interior”

-Vogue UK



Photo: Nikolas Koenig

Harmonious indoor/outdoor living with the  
most inspiring ocean panoramas



## “First-rate art”

- *T Magazine, The New York Times,*  
*Travel, Winter 2009*

Welcome Desk

Photo: Nicolas Koenig / Art: Andy Warhol, Camouflage, Acrylic and silkscreen ink on canvas / 1986





“Something much grander  
than a mere hip hotel”

- *latimesmagazine.com, Mayer Rus,*  
*December 4, 2009*

Living Room

Photo: Jesse David Harris





“The next evolution  
in hospitality...  
across the globe”

- *Haute Living, December 2009/January 2010*

Living Room Terrace

Photo: Jesse David Harris





“MR CHOW will be this  
year’s Art Basel hot spot.”

- *Ocean Drive, July 2009*

MR CHOW®

Photo: Nicolas Koenig





“a night out at Soleà is as fun as the food is seriously good.”

“purely Catalan, executed with such care that virtually everything is worth trying”

“ ★ ★ ★ ★ ”

- *Miami Herald, January 21, 2010*

Soleà

Photo: Nicholas Koenig





“The lushest pool  
experience in Miami”

- *Elle*, July 2009

WET





“whimsical outdoor  
rooms of sea grape,  
saw palmetto and  
pitch apple trees hung  
with birdcages and  
fragments of poetry”

- *The New York Times*, June 11, 2009



“it doesn't just nod to serious art and design, it actually delivers.”

- *latimesmagazine.com, Mayer Rus, December 4, 2009*

“The [Art Basel] nights seemed to belong to W South Beach, this year's ground zero for VIP dinners and socials”

-*Ocean Drive, February 2010*

Living Room Bar

Photo: Jesse David Harris / Art: Christopher Wool, Untitled (Run dog eat dog), enamel on aluminum, 1990





“ultra-exclusive”

“the hue of promise,  
the embrace of  
privilege, the notion  
of utter exclusivity”

-“944” magazine, August 2009

Wall

Photo: Jesse David Harris





“Should the compulsion to trim down or tone up prevail, the W South Beach’s two pools, tennis court, basketball courts, beachside yoga and signature Bliss spa are there to lend a helping hand.”

*-Wallpaper, July 2009*

Bliss<sup>®</sup> Spa  
SWEAT<sup>®</sup> Fitness  
Swing Tennis Court  
Basketball Court



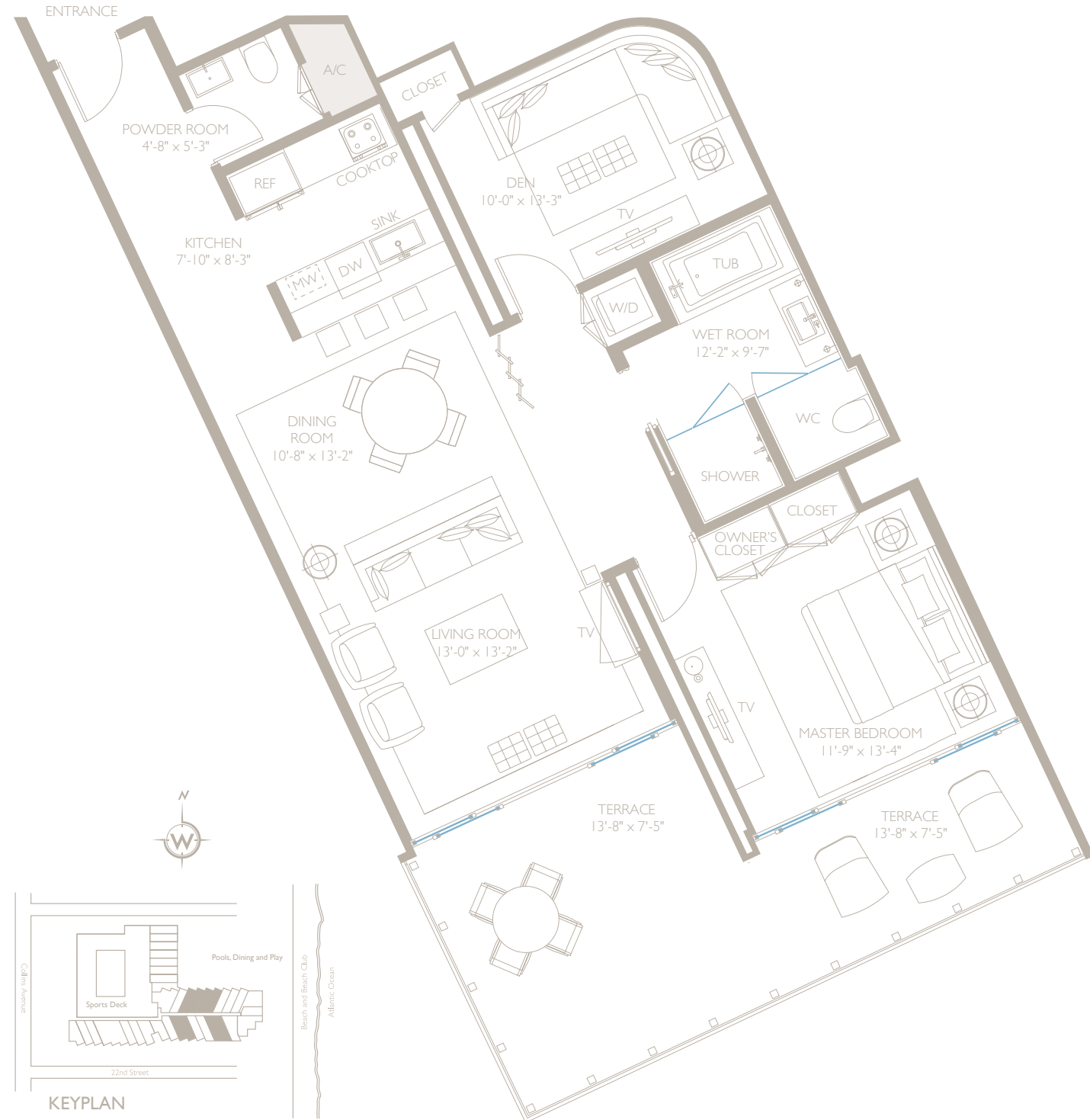


# THE PLANS

## OCEAN RESIDENCE C

1 BEDROOM, 1.5 BATH

INTERIOR	1151 SQ.FT.	106.9 SQ.M.
EXTERIOR	195 SQ.FT.	18.1 SQ.M.
TOTAL	1346 SQ.FT.	125.0 SQ.M.



Stated dimensions are measured to the exterior boundaries of the exterior walls and the centerline of interior demising walls and in fact vary from the dimensions that would be determined by using the description and definition of the "Unit" set forth in the Declaration (which generally only includes the interior airspace between the perimeter walls and excludes interior structural components). Additionally, measurements of rooms set forth on any floor plan are generally taken at the greatest points of each given room (as if the room were a perfect rectangle), without regard for any cutouts. Accordingly, the area of the actual room will typically be smaller than the product obtained by multiplying the stated length times width. All dimensions are approximate.



Photo: Jason Okutake



Photo: Jason Okutake

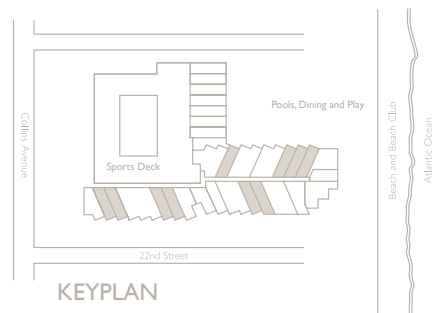
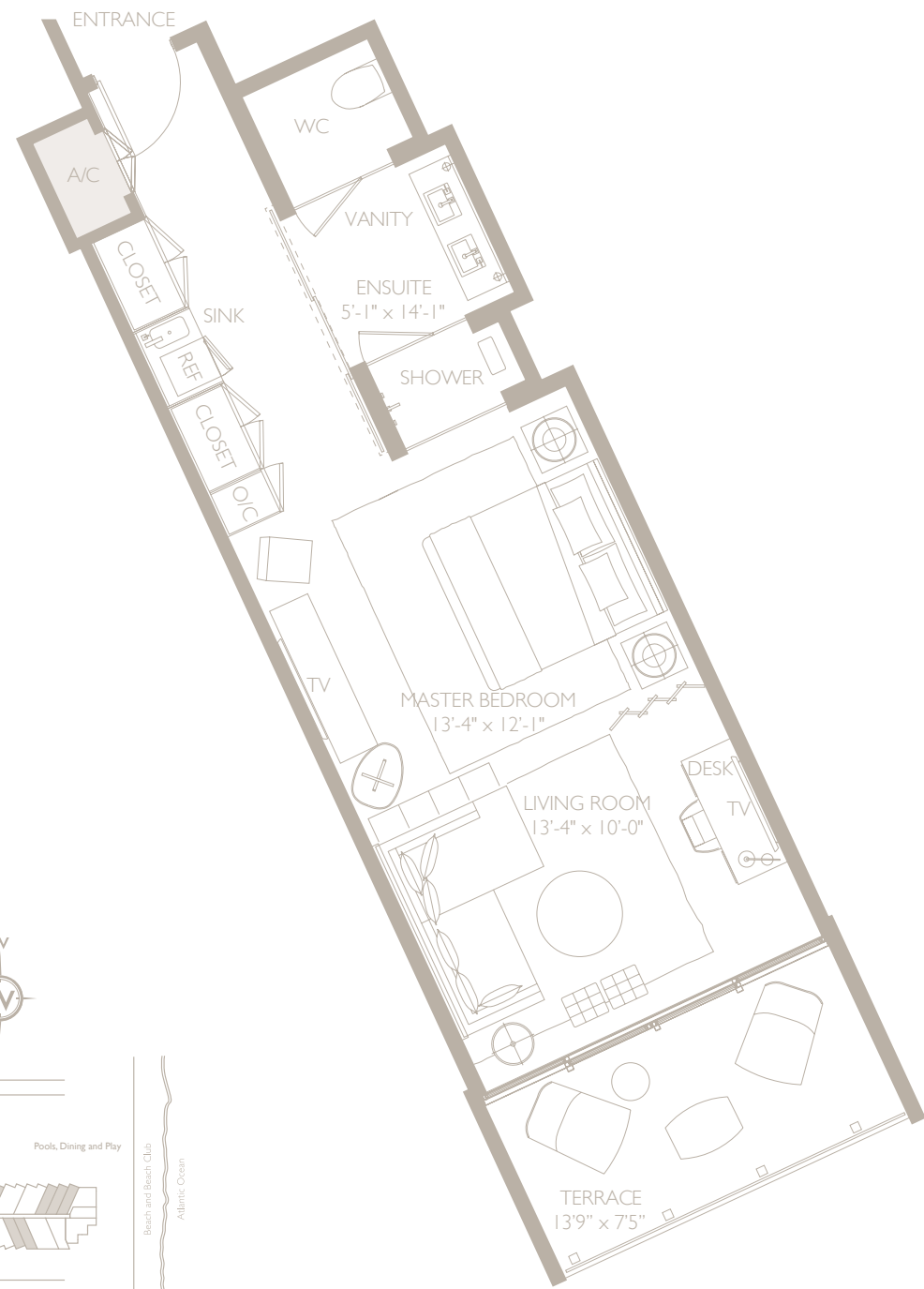


# THE PLANS

## OCEAN SUITE F

1 BEDROOM, 1 BATH

INTERIOR	574 SQ.FT.	53.3 SQ.M.
EXTERIOR	109 SQ.FT.	10.1 SQ.M.
TOTAL	683 SQ.FT.	63.4 SQ.M.



Stated dimensions are measured to the exterior boundaries of the exterior walls and the centerline of interior demising walls and in fact vary from the dimensions that would be determined by using the description and definition of the "Unit" set forth in the Declaration (which generally only includes the interior airspace between the perimeter walls and excludes interior structural components). Additionally, measurements of rooms set forth on any floor plan are generally taken at the greatest points of each given room (as if the room were a perfect rectangle), without regard for any cutouts. Accordingly, the area of the actual room will typically be smaller than the product obtained by multiplying the stated length times width. All dimensions are approximate.



Photo: Jason Okutake



Photo: Jason Okutake



# THE RESIDENCES AT W SOUTH BEACH

The ultimate oceanfront condominium ownership opportunity in one of the world's most vibrant cultural and entertainment districts, The Residences at W South Beach provides privileged owners with access to every conceivable resort living luxury:

- 300 feet of wide, white sand Atlantic beachfront
- museum-quality art collection curated by Richard Marshall with works by Jean-Michel Basquiat, John Chamberlain, George Condo, Keith Haring, Damien Hirst, Richard Prince, Tom Sachs, Kenny Scharf, Richard Serra, Christopher Wool and Andy Warhol
- sleek, rich contemporary public spaces by Anna Busta/Studio B Design
- residence interiors by Yabu Pushelberg
- a glamorous pool set in Grove, a lyrical garden created in collaboration between famed conceptual landscape artist Paula Hayes and Anna Busta
- culinary delights from both international hotspot MR CHOW® and insider favorite Soleà
- 7,000-plus square foot Bliss® Spa, Sweat® fitness, Swing tennis court, and basketball court
- sultry nightlife in the swank Wall ultra-lounge
- seamless Whatever/Whenever® signature service
- exclusive W Residences owner benefits program





Photo: Nikolas Koenig

**W**  
SOUTH BEACH  
THE RESIDENCES





Tjuvholmen Allé 17, Aker Brygge/Tjuvholmen, Oslo, Norway  
[www.becuriou.com](http://www.becuriou.com) | [info@becuriou.com](mailto:info@becuriou.com)



SOUTH BEACH  
THE RESIDENCES







info@becuriou.com



+47 2407 6666



Tjuvholmen Allé 17, Oslo  
91 Wimpole St, London

## WHY CHOOSE US



Tailor-Made Services



Diverse Travel Expertise



Competitive Prices

